

TDEP CLZ Series Marine Vertical Self-Priming Pump



The CLZ series marine vertical self-priming pump has small size, good self-priming performance (without the need for external self-priming devices), and light weight.

The CLZ series marine vertical self-priming pump is easy to install, use, and maintain. There is no need to install a bottom valve in the pipeline for the CLZ series marine vertical self-priming pump. Before operation, it is only necessary to ensure that there is a fixed amount of liquid in the pump body of the CLZ series marine vertical self-priming pump. Therefore, the pipeline system of the CLZ series marine vertical self-priming pump has been simplified.

Model Definition

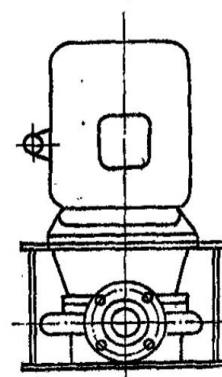
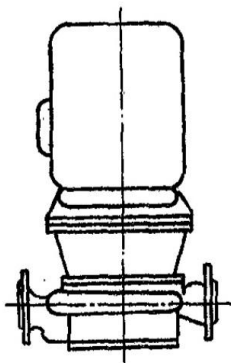
TDEP-65CLZ-5(Z)A

TDEP	Pump series by TRODAT
65	Suction inlet diameter, mm
CLZ	Ship use vertical self priming centrifugal pump
5	Integer of N_s (pump specific speed)/10
Z	Direct connected
A	The first impeller revised, B means the second impeller revised

The CLZ series marine vertical self-priming pump is used as a bilge, ballast, fire pump, as well as a sea and fresh water cooling and sanitation pump. Large-sized of CLZ series marine vertical self-priming pump can be used as supporting pumps for anti smuggling water cannons and fire monitors.

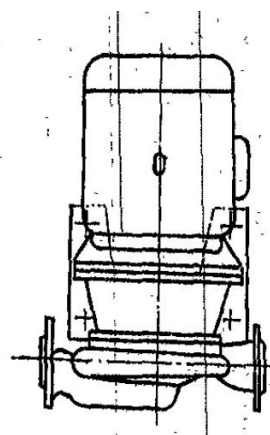
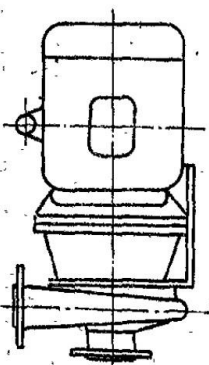
The CLZ series marine vertical self-priming pump is a vertical, single-stage single suction direct connection type, with the following three structural types:

- a、 Radial entry and exit with column foot type; (See Figure 1a)
- b、 Axial suction and radial discharge with wall mounted; (See Figure 1b)
- c、 Radial in and out with wall mounted. (See Figure 1c)



Radial inlet and outlet column foot type

When the motor power is greater than 30kW



Wall mounted with axial suction and radial discharge

Radial in and out with wall mounted Motor power less than or equal to 7.5kW

Technical Standard

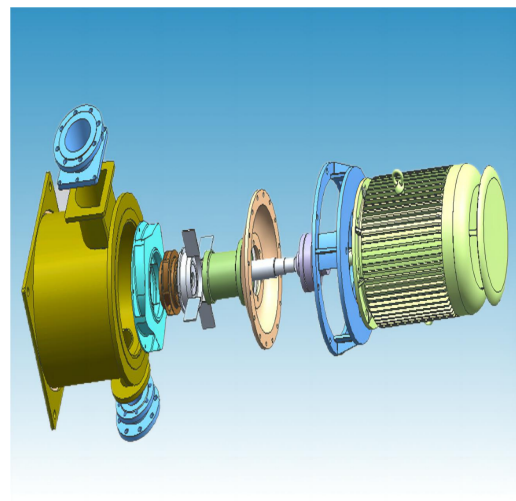
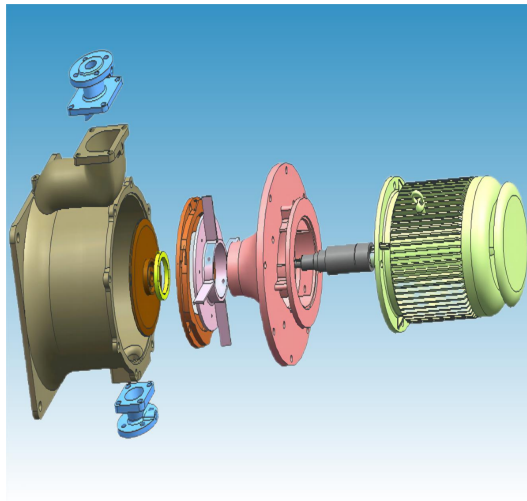
CLZ series marine vertical self-priming pump complies with the provisions of China standard CB/T 3523-93 and CLZ series marine vertical self-priming pump is manufactured according to the approved product drawings and technical documents according to the prescribed procedures.

For special marine vertical self-priming pump, in addition to meeting the requirements of this standard CB/T 3523-93, they should also comply with the provisions of the technical agreement or purchase contract.

Environmental conditions for CLZ series marine vertical self-priming pump

The pump should be able to operate reliably under the navigation conditions of the following vessels:

- a. Temperature cabin temperature: 0-50 °C;
- b. Humidity: The relative temperature of the air is less than or equal to 95%, and it contains a small amount of oil mist or salt;
- c. Lateral inclination $\pm 15^\circ$, longitudinal inclination $\pm 5^\circ$;
- d. Vertical swing $\pm 7.5^\circ$, lateral swing $\pm 22.5^\circ$, with a period of 5-10 seconds;
- e. Under specified conditions, the pump should be able to withstand environmental vibrations of 2-80Hz.



Technical Specification

Type	Capacity m ³ /h	Head m	Speed r/min	Motor Power kW	NPSH Net positive suction head m
TDEP-40CLZ-2(Z)	5	60	2950	5.5	4.0
TDEP-50CLZ-9(Z)	27	14.5		3.0	4.0
TDEP-50CLZ-7(Z)	12.5	20		3.0	4.0
TDEP-50CLZ-6(Z)	21	30		4.0	4.0
TDEP-50CLZ-4(Z)	12.5	32		3.0	4.0
TDEP-50CLZ-3(Z)	12.5	50		5.5	4.0
TDEP-65CLZ-9(Z)	25	20		3.0	4.0
TDEP-65CLZ-6(Z)	25	32		5.5	4.0
TDEP-65CLZ-5.5(Z)	30	35		7.5	4.0
TDEP-65CLZ-5(Z)	25	45		7.5	4.0
TDEP-65CLZ-4.5(Z)	25	60		11	4.0
TDEP-65CLZ-3(Z)	25	80		18.5	4.0
TDEP-80CLZ-13(Z)	45	21		5.5	3.0
TDEP-80CLZ-11(Z)	50	25		7.5	4.0
TDEP-80CLZ-9(Z)	50	32		11	4.0
TDEP-80CLZ-9	72	20		15	5.0
TDEP-80CLZ-9A	60	25		11	5.0
TDEP-80CLZ-7(Z)	40	50		15	4.0
TDEP-80CLZ-6(Z)	50	48		15	5.0
TDEP-80CLZ-6A	30	60		18.5	5.0
TDEP-80CLZ-5	50	67		22	5.0
TDEP-80CLZ-5A	50	60		18.5	5.0
TDEP-80CLZ-4	50	80		30	5.0
TDEP-100CLZ-13	100	32		18.5	5.0
TDEP-100CLZ-9	100	50		37	5.0
TDEP-100CLZ-8	80	50		22	4.8
TDEP-100CLZ-7	80	60		30	5.0
TDEP-100CLZ-6	80	80		45	5.0
TDEP-100CLZ-5	100	120		75	5.0
TDEP-100CLZ-4	80	100		45	5.2
TDEP-125CLZ-23	160	20		18.5	5.0
TDEP-125CLZ-18	150	62		55	5.0
TDEP-125CLZ-16.5	160	32		30	5.0
TDEP-125CLZ-13	250	30		45	6.0
TDEP-125CLZ-12	160	45		45	6.0
TDEP-125CLZ-8	150	75		75	6.0
TDEP-150CLZ-20	200	23	37	5.0	